



















TRICKS

























HANG TEN  
MOSCHINO  
COSSINI



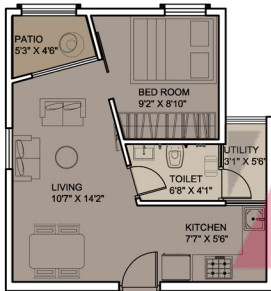




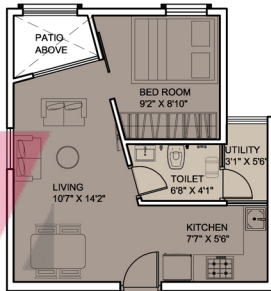


**UNIT PLAN 1BHK - LUXURY**

B1, B2, B8 & C3 Building Units



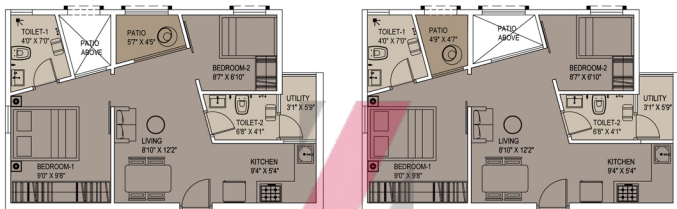
TYPICAL EVEN FLOOR UNIT



TYPICAL ODD FLOOR UNIT

BLDG - B1, B2, B8 & C3 ( 1BHK - LUXURY )			
TYPE	FLOOR	CARPET AREA IN SQ.FT	SALEABLE AREA
1-L	EVEN FLOOR	316	442
	ODD FLOOR	294	412





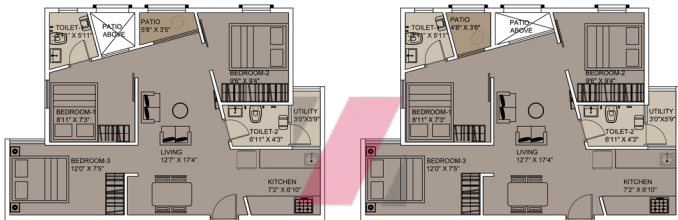
TYPICAL EVEN FLOOR UNIT

# ZRICKS

TYPICAL ODD FLOOR UNIT

BLDG -A14,A15,B3,B6,C2,C7,D1&D6( 2 BHK )			
TYPE	FLOOR	CARPET AREA IN SQ.FT	SALEABLE AREA
2 BHK	EVEN FLOOR	418	585
	ODD FLOOR	416	582





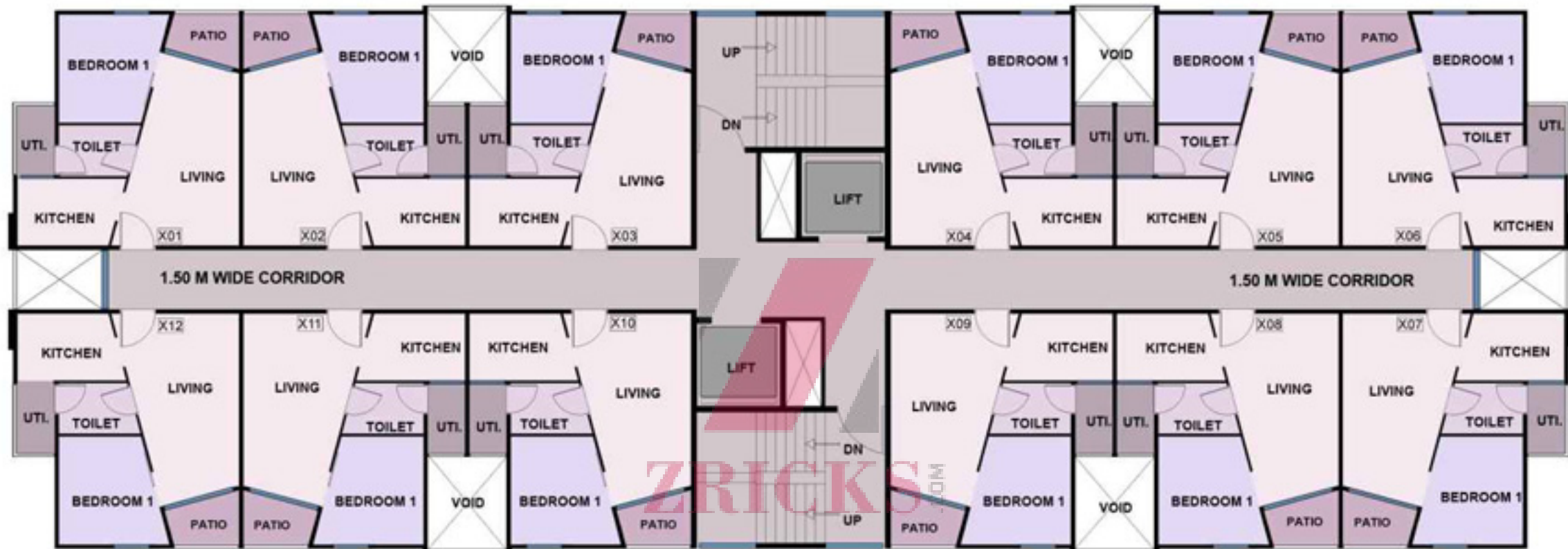
TYPICAL EVEN FLOOR UNIT

**ZRICKS** CONSTRUCTION

TYPICAL ODD FLOOR UNIT

BLDG -B7,C4,C5&C6( 3BHK )			
TYPE	FLOOR	CARPET AREA IN SQ.FT	SALEABLE AREA
3 - BHK	EVEN FLOOR	571	799
	ODD FLOOR	572	800





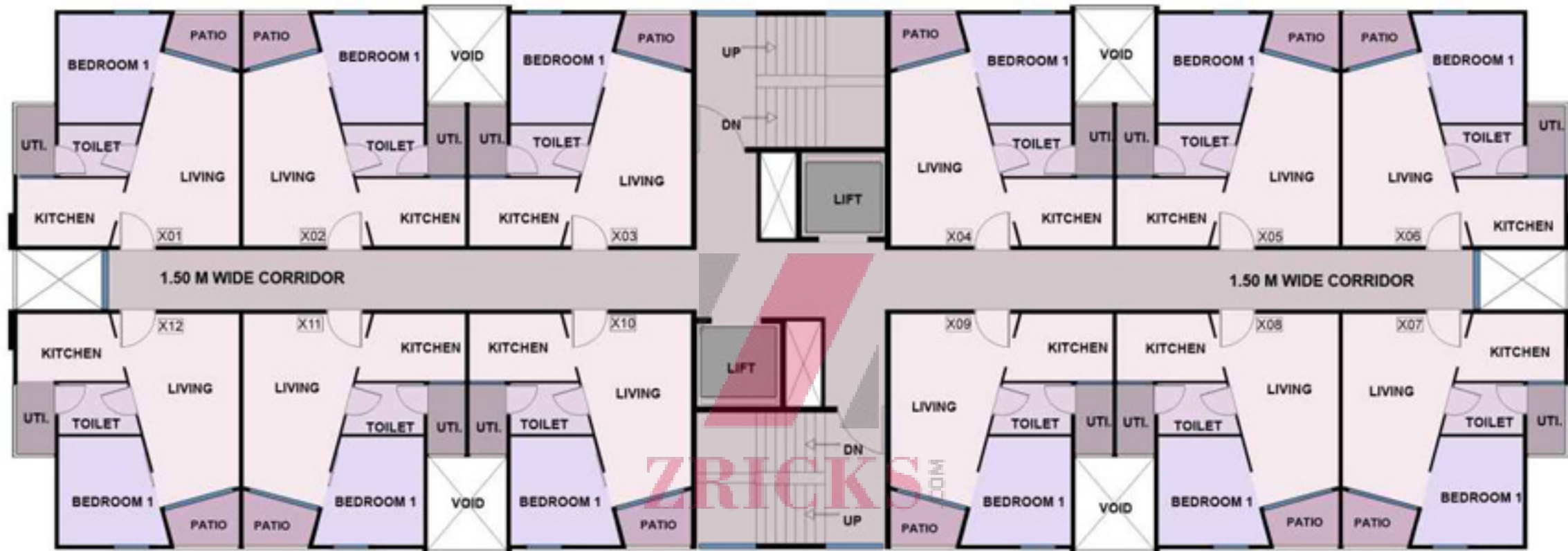
## TYPICAL FLOOR PLAN - 7FLOOR

**1 BHK BLOCK A2**

Architect  
Hafeez  
Contractor







**TYPICAL FLOOR PLAN - 1FLOOR**



**1 BHK BLOCK A1**

**Architect  
Hafeez  
Contractor**







# MASTER PLAN HINJEWADI

## MASTER PLAN



### LEGEND

1. SHOPPING PLAZA
2. SHOPPING CENTRE
3. MULTIPURPOSE GROUND
4. AMPHITHEATRE
5. CHILDREN'S PLAY AREA
6. SENIOR CITIZEN'S PARK
7. FORESTED STEPPED GARDEN
8. 18 M WIDE APPROACH ROAD
9. 12 M WIDE ROAD
10. STEPPED SIDE GARDENS
11. 1 BHK SMART A7, A8
12. 1 BHK LUXURY  
A9, A10, B1, B2, B7, B8,  
C3, C4, C5, C6
13. 2 BHK A1, A2, A3, A4, A5, A6, A11  
A12, A14, A15, B3, B6, C2, C7, D1, D6
14. 3 BHK A13, B7, C4, C5, C6
15. ACTIVITY PARK
16. CLUB HOUSE/SHOPPING
17. PROPOSED SCHOOL
18. PLAY COURT
19. AMENITY
20. FIRE STATION
21. PROPOSED SUB STATION
22. FEATURE ROUND ABOUTS
23. MAIN AVENUE ROAD
24. GARDEN 1
25. GARDEN 2
26. GARDEN 3
27. GARDEN 4
28. GARDEN
29. GARDEN
30. PLAY COURTS
31. BUSINESS CENTER
32. SHOPPING MALL
33. MULTIPURPOSE PLAYGROUND
34. MULTIPLEX
35. CLUSTERED DEVELOPMENT

- 1 BHK SMART
- 2 BHK-2
- 1 BHK LUXURY
- 2 BHK-3
- 2 BHK-1
- 3 BHK
- FOR FUTURE DEVELOPMENT

SOME OF THE AMENITIES ARE ONLY PLANNED AND MAY NOT BE EXECUTED.





Each city emphasizes the 5 principals of XRBIA

1. Environmental Stewardship





1 BHK

2 BHK

3 BHK



### DEVELOPMENT LAYOUT

1. GATE
2. AVENUE ROAD
3. SHOPPING ON GROUND
4. FEATURE ROUND ABOUT
5. INTERNAL ROAD
6. CLUB HOUSE
7. LAP POOL
8. KID'S POOL
9. PARTY LAWN
10. GARDEN
11. SERVICE / SUBSTATION
12. STEPPED SIDE GARDEN
13. CHILDREN'S ACTIVITY PARK
14. MULTIPURPOSE PLAY AREA

